

  
BELLEFONTAINE  
CEMETERY  
AND ARBORETUM

---

WILDWOOD VALLEY GARDENS

---



*Yesterday. Today. Forever.*



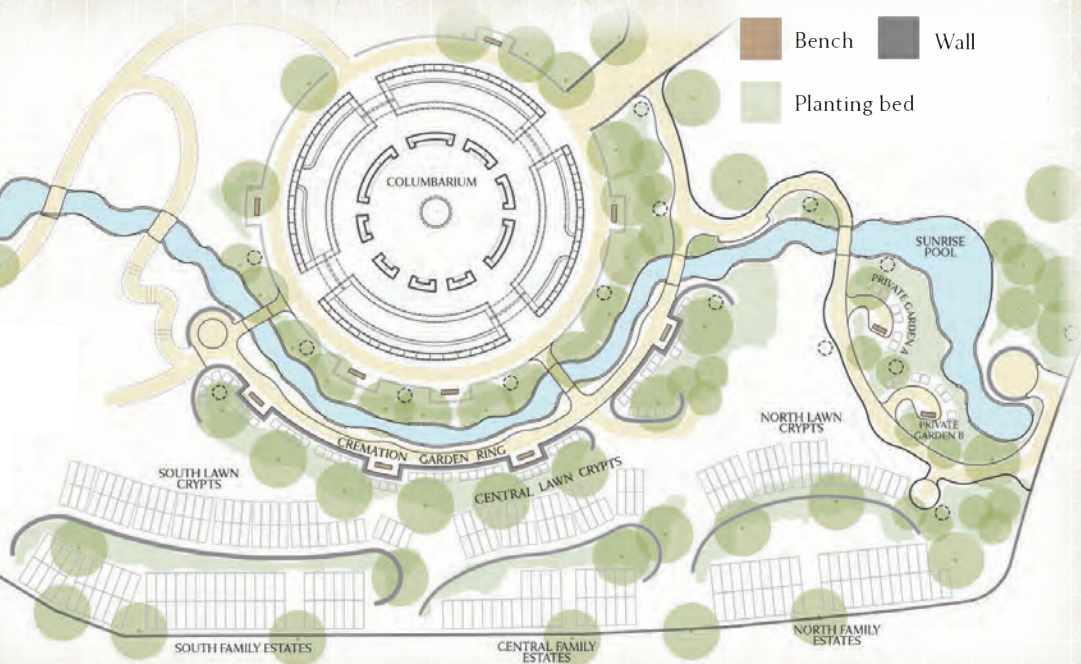
## Introducing Wildwood Valley Gardens

Wildwood Valley is a peaceful, commemorative garden focused on honoring loved ones. This serene memorial space is nestled between Bellefontaine's reflective Cypress and Cascade Lakes. With its winding paths, flowing stream, curving walls and grassy terraces, it offers an experience for the senses. The scent of flowering plants, the soft bubbling of the stream, and tranquil colors combine to create a comfortable and immersive space of remembrance for visitors to enjoy.

This botanical jewel offers traditional burial and cremation options for both individuals and families who wish to be memorialized in this one-of-a-kind place. For more information or to arrange a private tour, please call the cemetery office at (314) 381-0750.

### Wildwood Valley Aerial Map

- |  |              |   |                        |
|--|--------------|---|------------------------|
|   | Tree         |  | Cremation Gravespace   |
|   | Path         |  | Traditional Gravespace |
|   | Water        |  | Statuary Gardens       |
|   | Bench        |  | Wall                   |
|  | Planting bed |   |                        |





## *Family Estates*

The Family Estates of Wildwood Valley are located along the highest terrace of the gardens, adjacent to Bellefontaine's Lake Avenue. Each Family Estate can accommodate cremation, traditional, or green burial, and may range in size from 4 to 24 graves, with lot pricing beginning at \$20,000. These estates back up to lush gardens, and feature sweeping views of Wildwood Valley and its surrounding lakes.



FAMILY ESTATES OF  
WILDWOOD VALLEY

## *Garden Lawn Crypts*

The Garden Lawn Crypts of Wildwood Valley are aligned just below the Family Estates in the grassy middle terrace of the gardens. Each lawn crypt is a pre-installed outer burial container accommodating up to two traditional burials in a single gravespace. For those who prefer an outer container such as a vault, these lawn crypts serve as an ideal alternative. Each garden lawn crypt includes two burial rights sold together, and memorialization on a dedicated panel in the adjacent garden wall. Pricing begins at \$7,500 for two rights of interment.



MEMORIAL WALL AND GARDEN LAWN  
CRYPTS OF WILDWOOD VALLEY

## *Cremation Gardens*

The Cremation Gardens at Wildwood Valley accommodate in-ground scattering and cremation burial in bio-degradable urns. Benches and a paved pathway line the area between each cremation garden and the stream. Each cremation burial is memorialized via a dedicated panel on the adjacent garden wall. Pricing for cremation burial begins at \$4,000 for the first right of interment, and \$1,200 for the second right.



STREAMSIDE CREMATION GARDEN  
BURIALS AT WILDWOOD VALLEY

## *Private Statuary Gardens*

The Private Statuary Gardens of Wildwood Valley are tucked throughout the lower terrace. These exclusive alcoves accommodate cremation burial and provide opportunities for custom statuary and other specialized memorialization. Each private garden is unique, but most offer views of the stream, semi-private walkways, and benches. A single garden may accommodate from 6-16+ cremations, with pricing beginning at \$50,000.



PRIVATE STATUARY GARDENS AT  
WILDWOOD VALLEY



## Lakeside Columbarium

Bellefontaine's open-air Lakeside Columbarium is located between Cypress and Cascade lakes in the heart of Wildwood Valley. The columbarium offers over 350 niches, measuring 12 x 12 x 12 inches each, with room for up to two urns per niche. Niche pricing is \$4,000 for the first right of inurnment, and an additional \$1,200 for the second. Engraving and niche opening/closing charges are included.



## Directions & Hours

From either direction of I-70, take exit 245B to northbound West Florissant Avenue. Drive 3/4 mile and enter the cemetery through the second set of gates on your right.

To get to Wildwood Valley, enter the cemetery via the Main Gate on West Florissant Avenue. Make a right on Fountain, a right on Evergreen and a right on Lakeside Drive.

Visiting hours: 8am-5pm daily.

Business hours: 8am-4:30pm Monday-Saturday or by appointment.

# BELLEFONTAINE CEMETERY AND ARBORETUM

4947 West Florissant Ave. | St. Louis, MO 63115  
Phone: (314) 381-0750 | Fax: (314) 381-0751  
[www.bellefontainecemetery.org](http://www.bellefontainecemetery.org)